

# Claystone

Live by the lake in Oakville

Your new lakeshore address



Artist's Concept. E. & O.E.

# Claystone

Live where life is beautifully simple.

Welcome to Claystone, a lakeside condominium built and developed by Graywood Developments in partnership with Hankyu Hanshin Properties Corp.

Experience a unique blend of small-town charm and modern sophistication, featuring elevated architecture, elegantly curated interiors, and thoughtfully designed suite layouts—all nestled in an unparalleled natural setting on the shores of Lake Ontario in South Oakville's coveted Bronte Village.

Claystone is lakeside living at its finest.







# Convenience by the lake.

## Parks & Recreation

- 1. Bronte Creek Provincial Park
- 2. Bronte Harbour
- 3. Bronte Harbour Yacht Club
- 4. Bronte Heritage Waterfront Park
- 5. Coronation Park
- 6. Fisherman's Wharf
- 7. Lakeside Park
- 8. Tannery Park
- 9. Trafalgar Park
- 10. Trafalgar Park Community Centre
- 11. Westwood Park

## Shopping

- 12. Anthropologie
- 13. COBS Bread
- 14. Denninger's Oakville
- 15. Farm Boy
- 16. Food Basics
- 17. Fortinos
- 18. James Perse
- 19. Kit & Ace
- 20. Lana's Boutique
- 21. LCBO
- 22. The Beer Store
- 23. Longo's
- 24. Lululemon
- 25. Metro
- 26. Rexall
- 27. Shoppers Drug Mart
- 28. Simply Green Baby
- 29. Very's Flowers

## Health & Wellness

- 30. 9Round Kickboxing
- 31. BlowDry Bar
- 32. Club Pilates
- 33. Goji Yoga
- 34. Goodlife Fitness
- 35. Leela Eco Spa
- 36. Nova Health Club
- 37. Rosewater Spa of Oakville
- 38. SpinCo Oakville

## Dining

- 39. AU79 Coffee
- 40. Buca Di Bacco
- 41. Chestnut's Cafe
- 42. Cucci Restaurant
- 43. El Spero
- 44. Marine Tavern
- 45. Pasquale's Trattoria
- 46. Piano Piano
- 47. Pilot Coffee Roasters
- 48. Plank Restobar
- 49. Por Vida Mezcal & Mexican
- 50. Pur & Simple
- 51. Sotto Sotto
- 52. Spencer's at the Waterfront
- 53. Starbucks
- 54. Sweet Bakery Oakville
- 55. Taste of Columbia
- 56. The Firehall Restaurant
- 57. The Flavour Fox Ice Cream
- 58. The Wine Bar
- 59. Tribeca Coffee

## Entertainment

- 60. Deerfield Golf Club
- 61. Oakville Centre for the Performing Arts

## Education

- 62. Appleby College
- 63. Chisholm Academy
- 64. Clanmore Montessori
- 65. MacLachlan College
- 66. Oakville Christian School
- 67. Rotherglen School
- 68. St. Mildred's–Lightbourn School
- 69. Walden International School

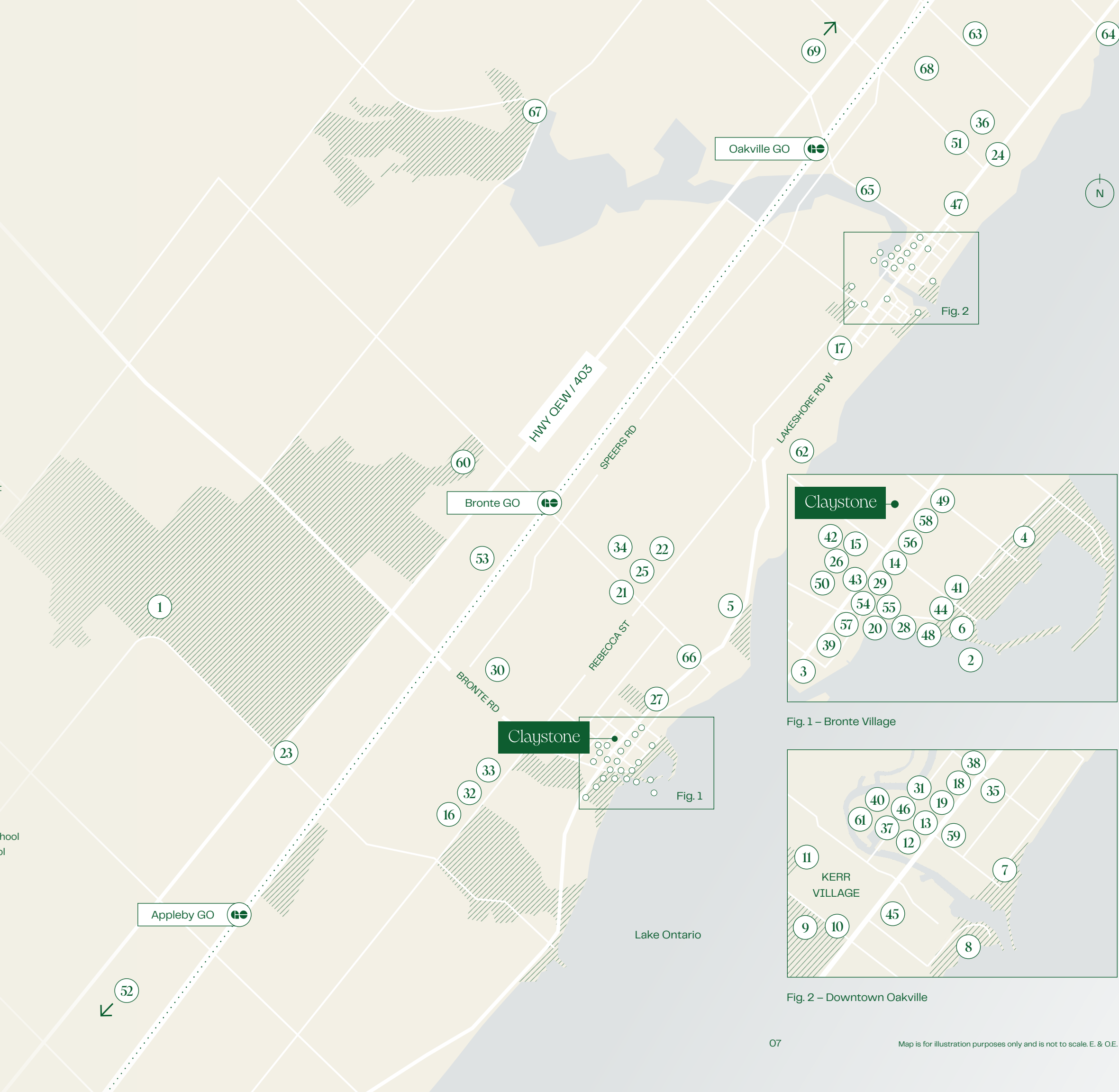
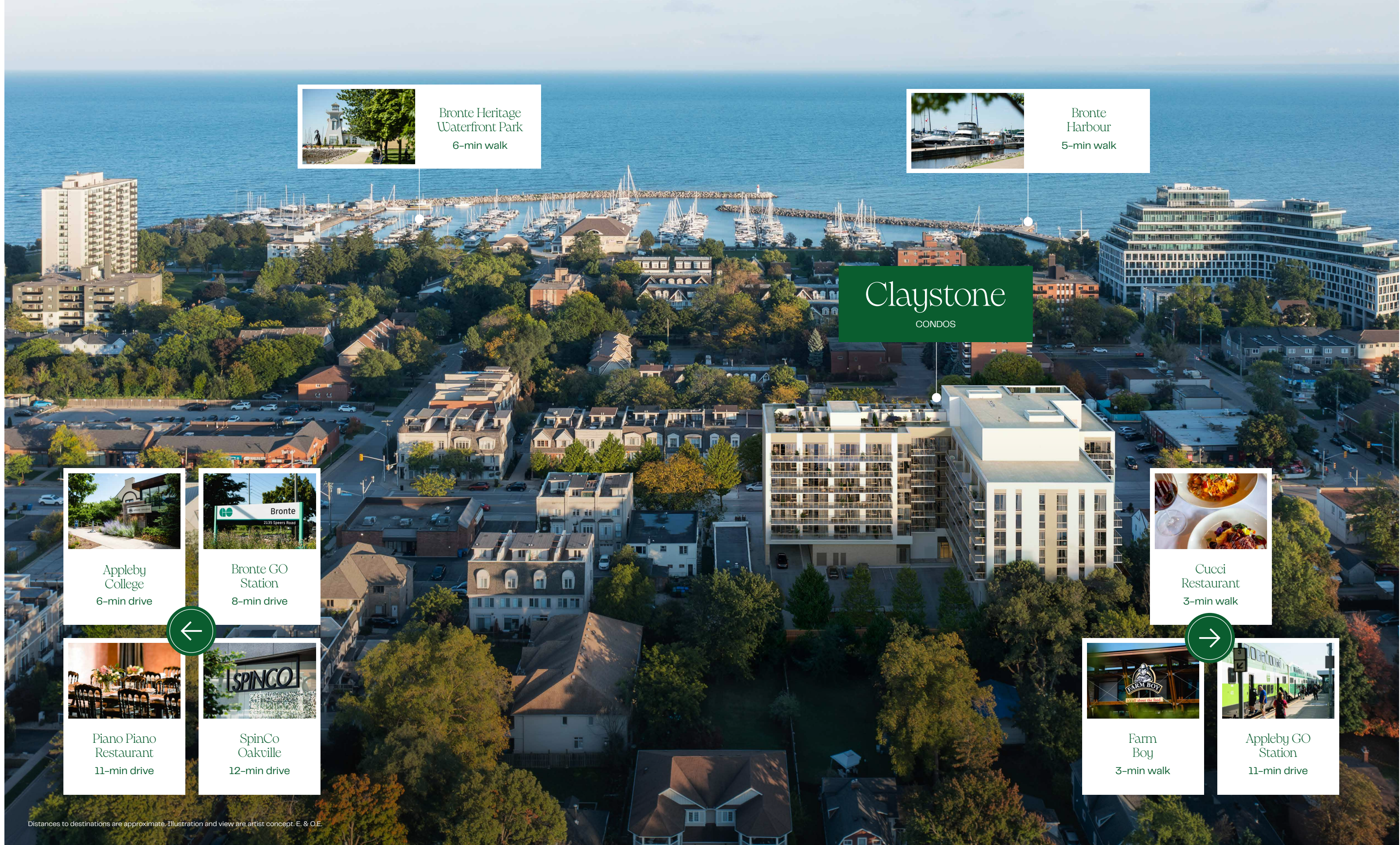


Fig. 1 – Bronte Village

Fig. 2 – Downtown Oakville





Bronte Heritage  
Waterfront Park  
6-min walk



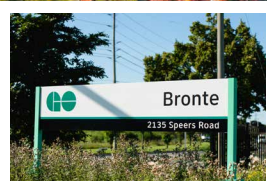
Bronte  
Harbour  
5-min walk

# Claystone

CONDOS



Appleby  
College  
6-min drive



Bronte GO  
Station  
8-min drive



Cucci  
Restaurant  
3-min walk



Piano Piano  
Restaurant  
11-min drive



SpinCo  
Oakville  
12-min drive



Farm  
Boy  
3-min walk



Appleby GO  
Station  
11-min drive

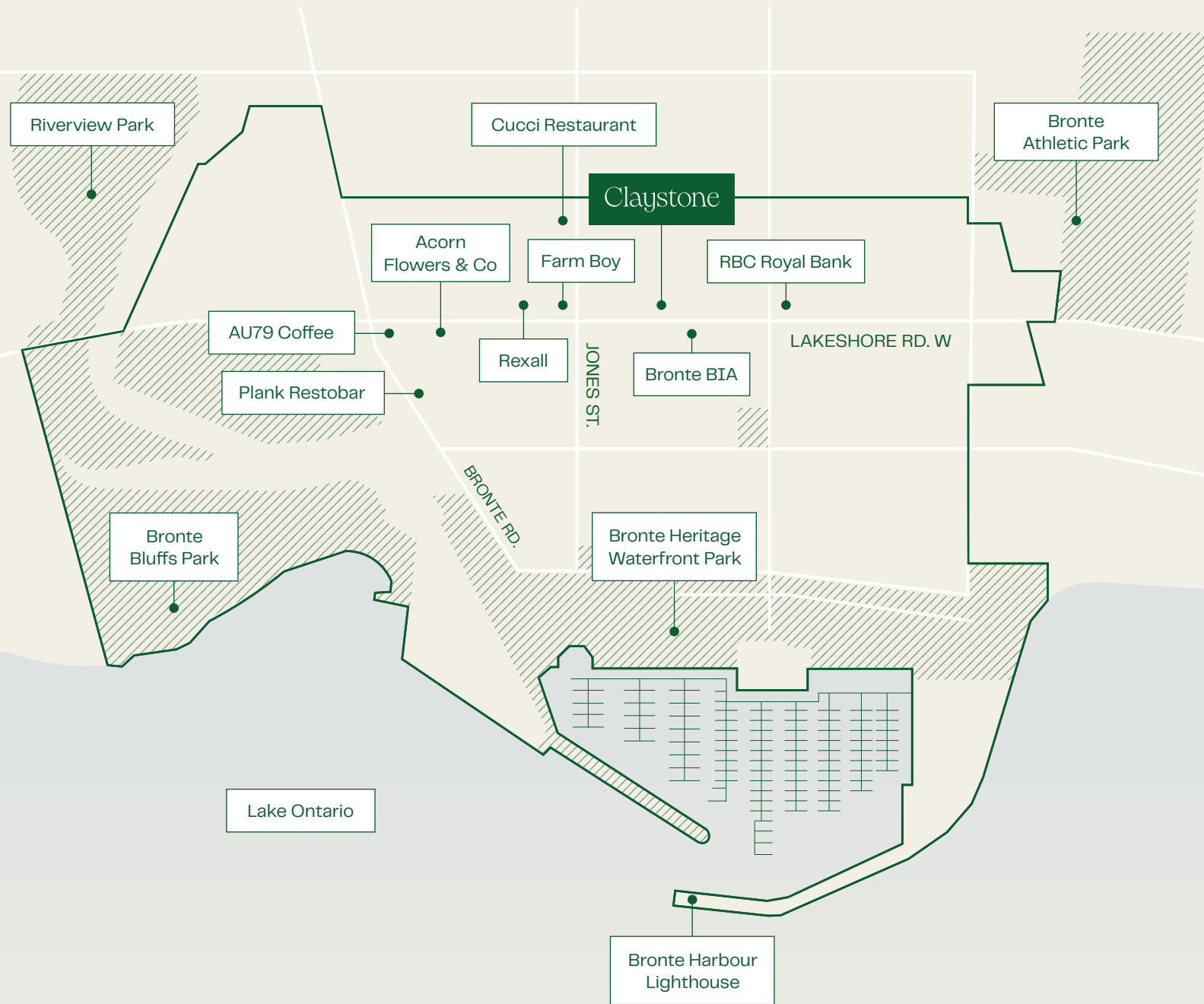
Distances to destinations are approximate. Illustration and view are artist concept. E. & O.E.



# A community for everyone.

Bronte is a vibrant community that blends its rich heritage with exciting plans for the future. As the area evolves, there are plans to expand sidewalks, create future shopping destinations and add greenspaces, further enhancing the waterfront village's appeal.

With increased events and street activations, Bronte is poised to maintain its welcoming atmosphere while continuing to adapt to the future.



Walkable & connected

A hub of local vibrancy

Close proximity to transit

Inclusive & future-focused





# Breathe in, look out.

## THE TERRACES

Welcome to your exclusive outdoor sanctuary. Discover Claystone's limited collection of private rooftop terraces, designed to let you fully embrace South Oakville's picturesque surroundings. These terraces offer a private retreat and extend your living space, featuring views of Bronte Village, the lake, and treetops beyond.

Entertain guests under a starlit sky, or savor a peaceful morning coffee with a refreshing waterfront breeze. Spacious, modern, and secluded, the terraces are ready to welcome you.

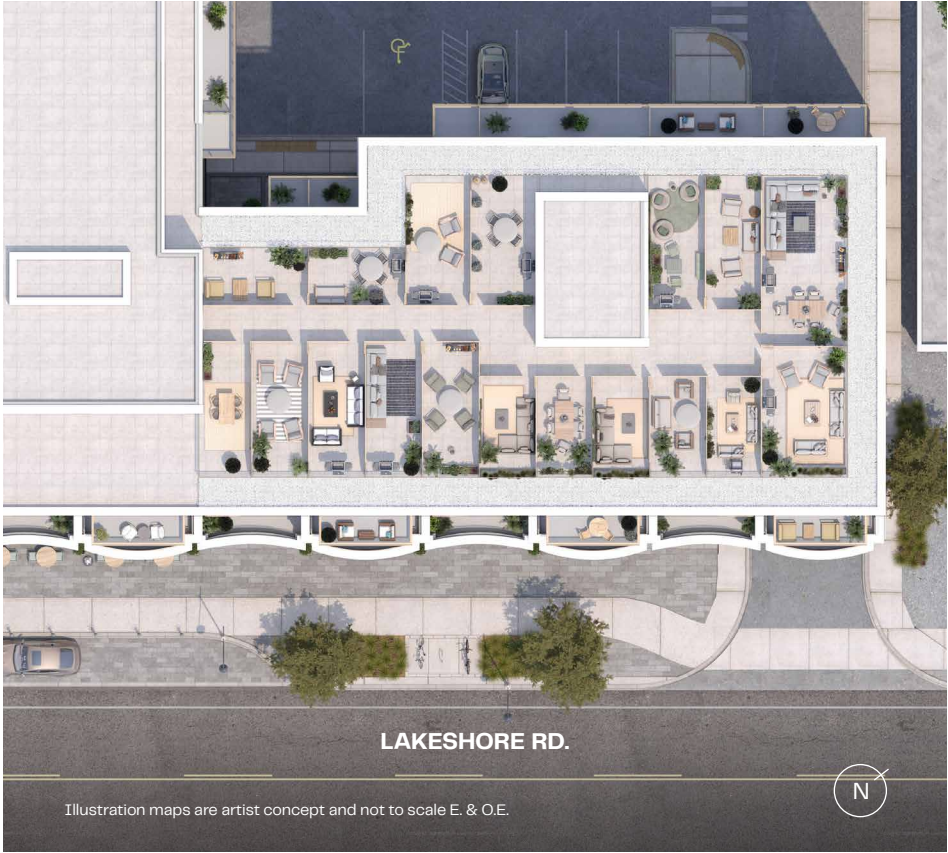






Illustration and view are artist concept. E. & O.E.

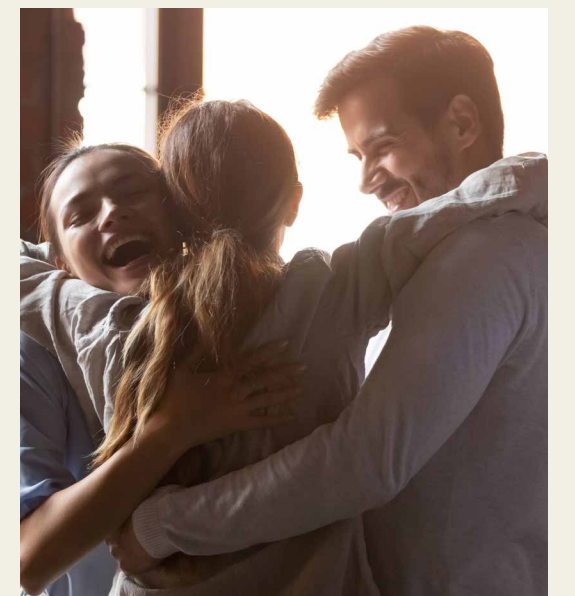


# Arriving home to Claystone.



## THE LOBBY

Claystone's lobby welcomes you home with thoughtfully curated decor, a friendly concierge, and an inviting seating area. Inspired by the natural beauty of Bronte Village, the lobby provides a serene sense of arrival—perfect for greeting guests or unwinding after a long day of exploring.





# Peak performance

## THE SHORE FITNESS STUDIO

Claystone's active wellness space is designed for peak performance, helping you look, feel, and live your best. Equipped with a variety of weight training and cardio machines, as well as a dedicated area for stretching or yoga, The Shore Fitness Studio is here to support your fitness goals and promote health and vitality every step of the way.

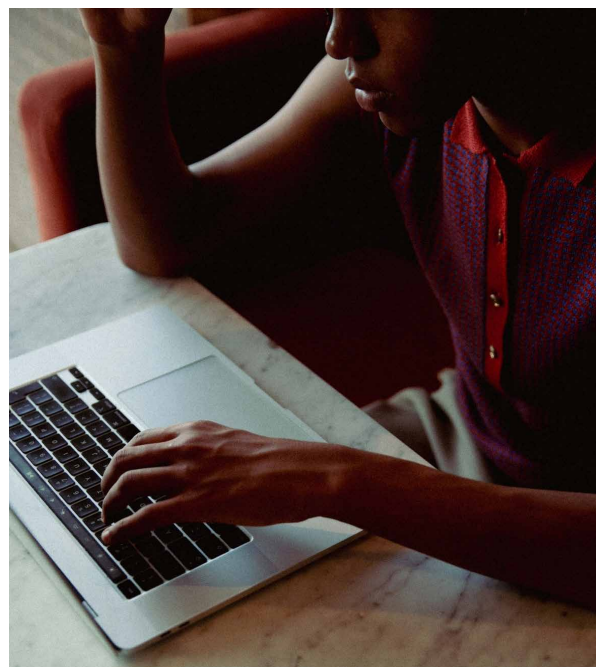




# Creativity by the lake.

## THE HARBOUR CO-WORKING LOUNGE

Let the calming ambience of the neighbourhood and nearby lake guide your creativity in The Harbour Co-working Lounge. This space has been thoughtfully designed with flexible seating arranged in open and private work areas, making it the perfect spot to focus, or meet up and brainstorm with others. With an abundance of natural light pouring in, you'll find inspiration in a setting designed for you to work your way.



Artist's Concept. E. & O.E.





Artist's Concept. E. & O.E.

# For every gathering.

## THE COVE EVENT LOUNGE

Come together for life's special moments at The Cove Event Lounge, an elegant and versatile party and gathering room at Claystone. This beautifully curated space is perfect for every occasion, from intimate dinners to lively celebrations with friends and family. Featuring ample seating, a modern kitchen, and stunning views, this space is a natural extension of your suite, ideal for hosting everything from birthday parties to holiday festivities. Make memories to last a lifetime.





# Amenity plan

- 1. Lobby Entrance
- 2. Parcel Storage
- 3. The Harbour Co-working Lounge
- 4. Bike Storage/Repair and Pet Wash
- 5. The Shore Fitness Studio
- 6. The Cove Event Lounge
- 7. Underground Parking Access
- 8. Dedicated Car Share Parking
- 9. BBQ Area
- 10. Gas Fire Pits
- 11. Outdoor Pet Area





# Inspired interiors

## ELEGANCE BY THE LAKE

The interiors of Claystone breathe new life into the concept of lakeside living with each space inspired by the soothing tones of the nearby waterfront. Open-concept layouts invite natural light to fill each space, creating an atmosphere that feels both spacious and intimate, while high-quality finishes and modern touches enhance the overall aesthetic.

Standard Suite – Kitchen and living space



Island is available on a per unit basis. Furnishings, accessories and window coverings are not included. Illustration and view are artist concept. E. & O.E.

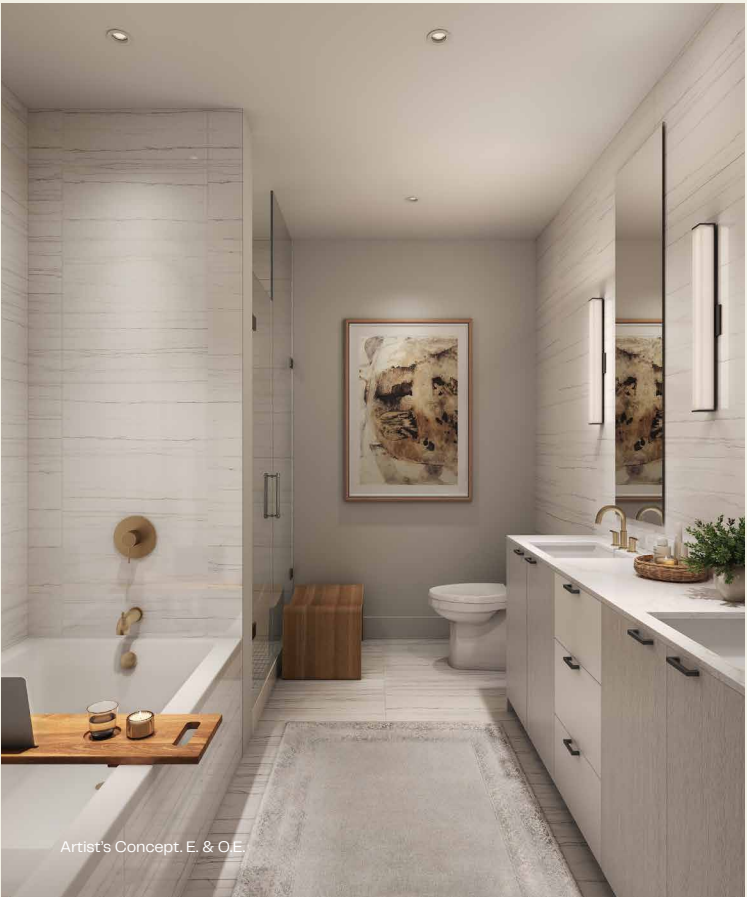


Premium Suite – Kitchen and dining space



Premium suite spec is only available for suites 1300sf. Speak to a sales representative for full details.  
Furnishings, accessories and window coverings are not included. Illustration and view are artist concept. E. & O.E.

Premium Suite – Ensuite



Artist's Concept. E. & O.E.



# The developers



**Graywood Developments | Developer & Builder**

Shouldn't a home be both a place to rest your head and a rewarding investment? That has been Graywood's philosophy for 40 years! As a Toronto-based private investment management company that specializes in the development of real estate properties of exceptional quality, we have a keen eye for how and where people want to live. We work hard to ensure that our purchasers are making the right investment, both personally and financially.

Our impressive portfolio of single-family homes, townhomes, mid-rise condominium buildings and high-rise towers throughout North America include notable GTA residences such as the landmark The Ritz-Carlton, Toronto, Peter & Adelaide, Wonder, 250 Lawrence, The Goode, JAC, Park and Lake, as well as

Fish Creek Exchange, Metroside, The Theodore and First & Park in Calgary, Alberta. Graywood's portfolio of communities speak to our commitment to deliver well-crafted, quality homes.

At Graywood, we believe in developing spaces that are not just optimized for life today but built with a vision of a prosperous tomorrow. Because if a home is one of the biggest investments you'll ever make, shouldn't your real estate developer also be an investment expert? We think so, and that's why we're both.

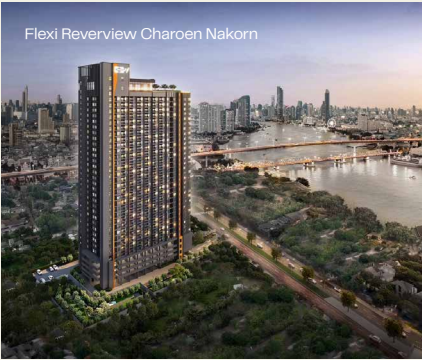


**Hankyu Hanshin Properties Corp. | Developer Partner**

With over 100 years of history, The Hankyu Hanshin Holdings Group has been at the forefront of creating vibrant communities and enriching lifestyles. Founded in Japan, we have built our reputation by developing dynamic urban spaces, residential communities, and commercial destinations that stand the test of time. As the group's comprehensive real estate developer, we have played a pivotal role in shaping neighborhoods along our Hankyu and Hanshin railway lines and in Osaka's Umeda district—transforming these areas into thriving hubs of connection and culture.

Our commitment to quality developments is demonstrated through thoughtfully designed residential properties, including our renowned condominium brand, “Geo.”

Each project reflects our dedication to delivering value that exceeds expectations. Through our real estate business, we aim to continue to provide “values that exceed expectation” for each and every one of our customers. In recent years, we’ve taken this vision globally, bringing our expertise to international markets. Since 2015, we’ve expanded into key regions, including ASEAN countries, and have delivered over 67,000 residential units, with more in development. Now, as we take our first steps in Canada with Claystone Condos, we’re excited to build on this legacy—creating homes and communities that inspire and endure. We invite you to be part of this new chapter as we continue shaping the future, one thoughtful development at a time.





# The team

**diamond  
schmitt**

## **Diamond Schmitt | Architect**

Diamond Schmitt is a global architecture firm designing transformative, purpose-driven, and highly sustainable buildings from its four studios located in New York, Toronto, Calgary, and Vancouver. The firm is a boutique practice of accomplished design architects who collectively create innovative design solutions for leading cultural, residential, academic, research, healthcare, and civic spaces worldwide. Diamond Schmitt's award-winning visionary designs can be found in more than 50 cities around the world.

P|D|S  
THE PATTON DESIGN  
STUDIO

## **The Patton Design Studio | Interior Design**

The Patton Design Studio is a team of dedicated interior designers, architectural technologists and support staff that have worked with developers and private residential clients for over 30 years. Their projects include prestigious high-rise and low-rise developments as well as private city, country and international residences.



## **Adesso Design Inc. | Landscape Architect**

Established in 2008, and incorporated in 2010, Adesso Design Inc. is a full service landscape architectural firm with projects ranging from custom residential to large scale master planned communities. Principals Mario Patitucci and Scott Henderson have over 40 years of combined experience in the landscape architectural profession. At Adesso we believe that the success of any project relies on teamwork and good communication.









claystonecondos.com



**GRAYWOOD**  
AN INTELLIGENT MOVE



Hankyu Hanshin Properties Corp.

The information in this brochure contains illustrations, maps and views that are artists concept.  
The content and programming is subject to change. See Sales Representatives for full details. E.& O.E.